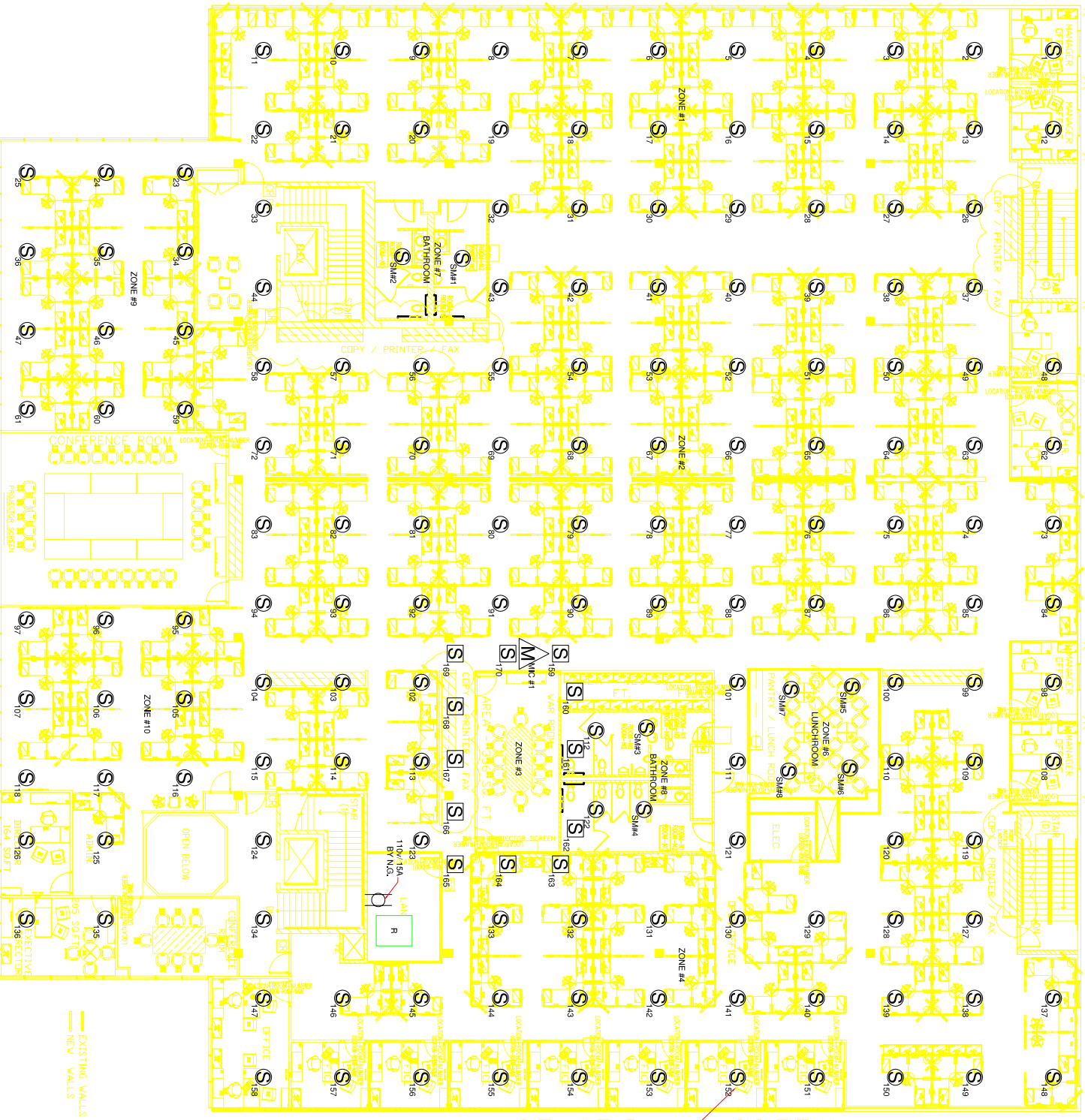


REV	DESCRIPTION	DATE	APPROVED
WA 1	ISSUED FOR APPROVAL	04-29-06	
WA 1	ISSUED FOR CONSTRUCTION		

RENOVATED RENOVATED RENOVATED NEW FRONT RENOVATED RENOVATED



SECOND FLOOR SUMMARY  
 EXECUTIVE OFFICES = 2  
 MANAGERS OFFICES = 14  
 CONFERENCE ROOMS = 11  
 PANTRY / LUNCH ROOM = 1  
 LUNCHROOM = 1  
 EXECUTIVE (8P)  
 WAR ROOM (12P)  
 LARGE CONFERENCE (40 P)

ZONE #5  
 ALL OFFICES

CONFERENCE ROOMS  
 EXECUTIVE (8P)  
 WAR ROOM (12P)  
 LARGE CONFERENCE (40 P)

- WWW.AVLELEC.COM  
SOUNDMASKING MUSIC SPEAKER  
MODEL LT280C-SM835VLM  
OTY = 8
- WWW.AVLELEC.COM  
SPEAKER  
MODEL SM80170  
OTY = 158
- WWW.AVLELEC.COM  
SOUNDMASKING SPEAKER  
MODEL LT280C-SM835V  
OTY = 12
- WWW.AVLELEC.COM  
MASKING MICROPHONE  
MODEL M012  
OTY = 1
- WWW.AVLELEC.COM  
SOUNDMASKING HEAD-END RACK  
MODEL H-E1  
OTY = 1
- M/C #1
- M/C #2
- M/C #3
- M/C #4
- M/C #5
- M/C #6
- M/C #7
- M/C #8
- M/C #9
- M/C #10
- M/C #11
- M/C #12
- M/C #13
- M/C #14
- M/C #15
- M/C #16
- M/C #17
- M/C #18
- M/C #19
- M/C #20
- M/C #21
- M/C #22
- M/C #23
- M/C #24
- M/C #25
- M/C #26
- M/C #27
- M/C #28
- M/C #29
- M/C #30
- M/C #31
- M/C #32
- M/C #33
- M/C #34
- M/C #35
- M/C #36
- M/C #37
- M/C #38
- M/C #39
- M/C #40
- M/C #41
- M/C #42
- M/C #43
- M/C #44
- M/C #45
- M/C #46
- M/C #47
- M/C #48
- M/C #49
- M/C #50
- M/C #51
- M/C #52
- M/C #53
- M/C #54
- M/C #55
- M/C #56
- M/C #57
- M/C #58
- M/C #59
- M/C #60
- M/C #61
- M/C #62
- M/C #63
- M/C #64
- M/C #65
- M/C #66
- M/C #67
- M/C #68
- M/C #69
- M/C #70
- M/C #71
- M/C #72
- M/C #73
- M/C #74
- M/C #75
- M/C #76
- M/C #77
- M/C #78
- M/C #79
- M/C #80
- M/C #81
- M/C #82
- M/C #83
- M/C #84
- M/C #85
- M/C #86
- M/C #87
- M/C #88
- M/C #89
- M/C #90
- M/C #91
- M/C #92
- M/C #93
- M/C #94
- M/C #95
- M/C #96
- M/C #97
- M/C #98
- M/C #99
- M/C #100
- M/C #101
- M/C #102
- M/C #103
- M/C #104
- M/C #105
- M/C #106
- M/C #107
- M/C #108
- M/C #109
- M/C #110
- M/C #111
- M/C #112
- M/C #113
- M/C #114
- M/C #115
- M/C #116
- M/C #117
- M/C #118
- M/C #119
- M/C #120
- M/C #121
- M/C #122
- M/C #123
- M/C #124
- M/C #125
- M/C #126
- M/C #127
- M/C #128
- M/C #129
- M/C #130
- M/C #131
- M/C #132
- M/C #133
- M/C #134
- M/C #135
- M/C #136
- M/C #137
- M/C #138
- M/C #139
- M/C #140
- M/C #141
- M/C #142
- M/C #143
- M/C #144
- M/C #145
- M/C #146
- M/C #147
- M/C #148
- M/C #149
- M/C #150
- M/C #151
- M/C #152
- M/C #153
- M/C #154
- M/C #155
- M/C #156
- M/C #157
- M/C #158
- M/C #159
- M/C #160
- M/C #161
- M/C #162
- M/C #163
- M/C #164
- M/C #165
- M/C #166
- M/C #167
- M/C #168
- M/C #169
- M/C #170
- M/C #171
- M/C #172
- M/C #173
- M/C #174
- M/C #175
- M/C #176
- M/C #177
- M/C #178
- M/C #179
- M/C #180
- M/C #181
- M/C #182
- M/C #183
- M/C #184
- M/C #185
- M/C #186
- M/C #187
- M/C #188
- M/C #189
- M/C #190
- M/C #191
- M/C #192
- M/C #193
- M/C #194
- M/C #195
- M/C #196
- M/C #197
- M/C #198
- M/C #199
- M/C #200

EXISTING WALLS  
 NEW WALLS

**avelec** SOUNDMASKING  
 NORTHROP GRUMMAN  
 SAN DIEGO, CA

WWW.AVLELEC.COM  
 8641 South Wrentham Rd  
 Conifer, Colorado 80433  
 PATRICK MCALLISTER  
 TEL: 303-670-1099 ext 11

1001S - DEVICE LOCATION DETAIL