

## Model

# TLM-A Series

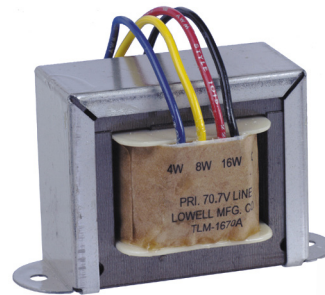
## High Performance Line Matching Transformers

### Features

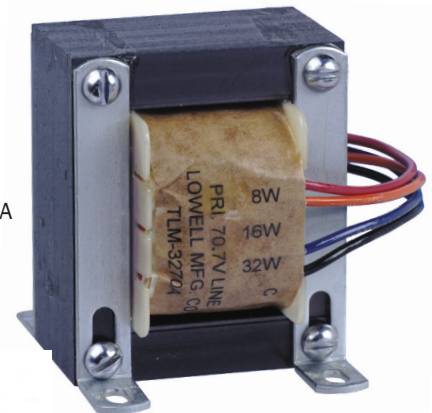
- Primary voltage: 70V
- 16W, 32W or 100W power rating
- Secondary impedance 8, 4 ohms
- Frequency response: 50Hz-15kHz  $\pm$ 1dB
- Lead length: 18"
- Color-coded leads

### A&E Specifications

The line matching transformer shall be AVLELEC Model \_\_\_\_\_ (TLM-1670A, TLM-3270A, TLM-10070A). Primary voltage shall be 70V with a power rating of \_\_\_\_\_ (16, 32, 100) watts. Primary taps shall be available at \_\_\_\_\_ (16/8/4, 32/16/8, 100/64/32/16) watts. Secondary impedance taps shall be available at 8 ohms and 4 ohms. All taps shall have clearly marked color-coded leads. Frequency response of the transformer shall be 50Hz-15kHz  $\pm$ 1dB with insertion loss not to exceed 0.6 dB.



Model TLM-1670A  
(16W)



Model TLM-3270A  
(32W)



Model TLM-10070A  
(100W)

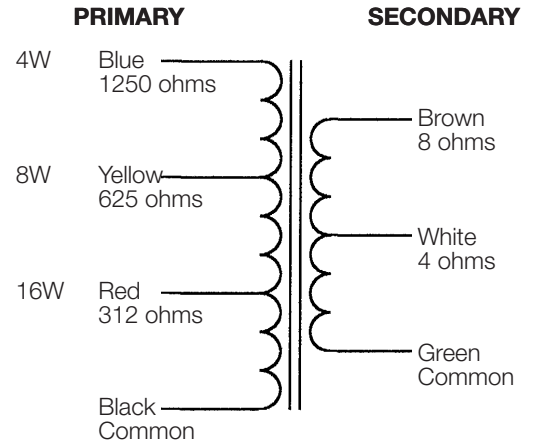
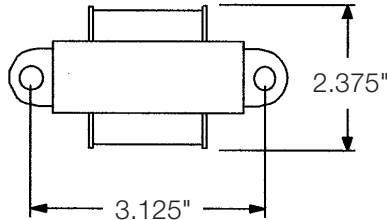
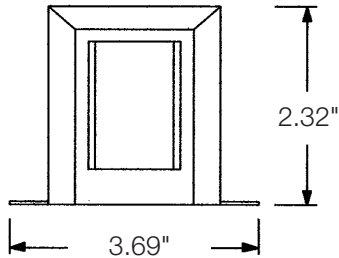
Model No.	Summary	Power Rating	Primary Taps	Secondary Impedance	Core Size (in)	Insertion Loss	Frequency Response	Lead Length (in)	Weight (lbs)
TLM-1670A*	70V	16W	16, 8, 4W	8, 4 ohms	.875 X 1.25	.6dB	50Hz-15kHz $\pm$ 1dB	18	2
TLM-3270A	70V	32W	32, 16, 8W	8, 4 ohms	1 X 1.5	.6dB	50Hz-15kHz $\pm$ 1dB	18	3.2
TLM-10070A	70V	100W	100, 64, 32, 16W	8, 4 ohms	1.25 X 1.25	.6dB	50Hz-15kHz $\pm$ 1dB	18	4.45

\* NOTE: Special adapters are available that allow the TLM-1670A to be mounted to AVLELEC 4" and 8" drivers. Call AVLELEC for more information and pricing.

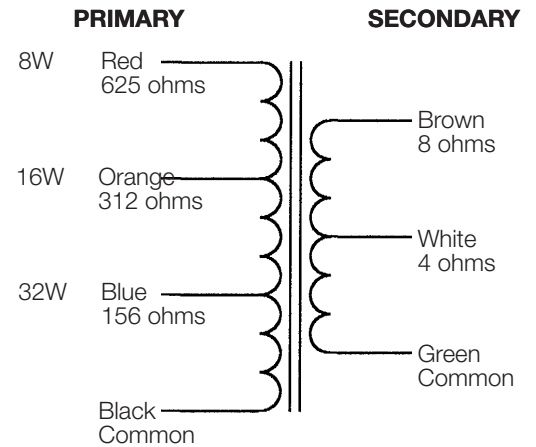
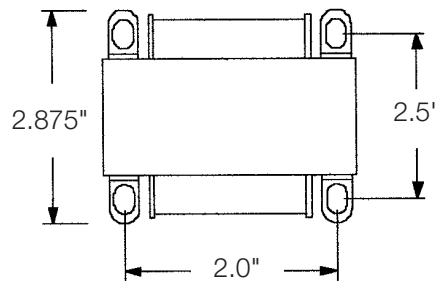
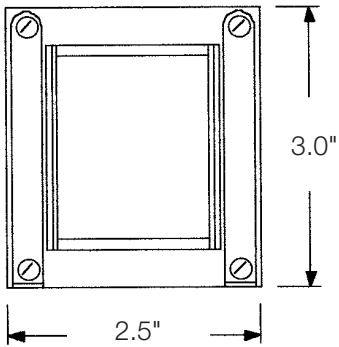
Technical Drawings

Measurements are inches unless otherwise indicated.

Model TLM-1670A



Model TLM-3270A



Model TLM-10070A

