

Model: SM805A

Sound Masking Speaker (8-in. 12W speaker)



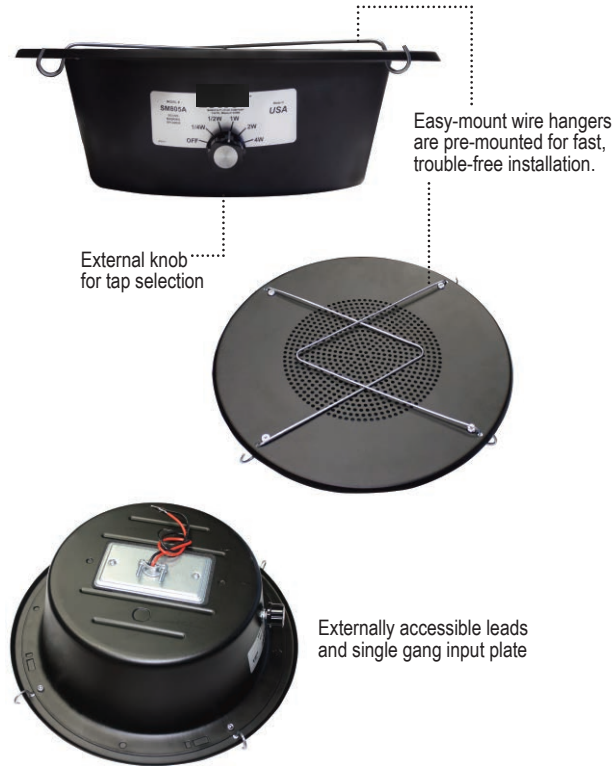
Description:

In general, the purpose of a sound-masking system is to provide greater conversational privacy and productivity in an open-office environment by adding ambient noise and shaping the signal to mask speech. The noise signal is fed from a noise generator with a built-in or separate amplifier to sound-masking speakers that are positioned out-of-view above the ceiling tiles.

The SM805A sound masking speaker ships completely assembled for suspended installation. It includes a 12W speaker with factory-wired 70V 4W transformer mounted in a 325 cu.in. backbox with grille, pre-installed wire hangers, and separate 4' chain. The installer-friendly system features externally accessible speaker leads at a single gang handibox cover with a 1/2" Romex connector located on the rear of the enclosure. The backbox and grille have a black powder epoxy finish.

Wire hangers allow for fast, trouble-free installation with easy positioning of the masking speaker for upward dispersion. Each pre-mounted hanger is formed of rigid, plated wire for stable, kink-free suspension from the structural deck using the S-hooks and 4' chain provided. Rigging hardware to attach the chain to the deck or other building structure is to be furnished by the installer.

A six-position rotary switch with externally accessible knob is factory installed to provide a convenient method of changing transformer taps. This rotary switch is particularly useful to balance the masking speaker system.



Easy-mount wire hangers are pre-mounted for fast, trouble-free installation.

External knob for tap selection

Externally accessible leads and single gang input plate



Includes 8" 12W dual cone speaker (no. 805)

Features:

- Ships completely assembled and ready-to-install.
- Assembly Includes:
 - 8" / 12W driver with factory-mounted transformer
 - Externally accessible knob for tap selection
 - 325 cu.in. backbox with grille
 - Externally accessible leads and single gang input plate
 - Mounted wire hangers
 - Separate 4' chain and S-hooks

A & E Specifications

The sound masking speaker assembly for suspended ceiling installations shall be Model SM805A. It shall include a speaker with factory-wired transformer mounted in a 325 cu.in. steel backbox with grille, externally accessible speaker leads, attached wire hangers and 4' chain. The speaker shall be an 8" dual cone with a power rating of 12W. The wired transformer shall be 70V with primary taps at 4, 2, 1, .5, and .25 watts. The assem-

bly shall include an externally accessible rotary switch to adjust tap selections. Speaker leads shall exit the backbox through a strain relief clamp on a single gang handibox cover on the rear of the enclosure. Suspension mounting shall be accomplished by connecting the provided S-hooks and 4' chain to the pre-installed wire hangers. Wire hangers shall be factory-mounted for upward sound dispersion.

Model No.	Driver	Driver Type	Power Rating	Transformer Taps	Backbox Volume (cu.in.)
SM805A	805	8" dual cone (5oz.)	12W	70V: 4, 2, 1, .5, .25W	325

